

The first moves and notation.

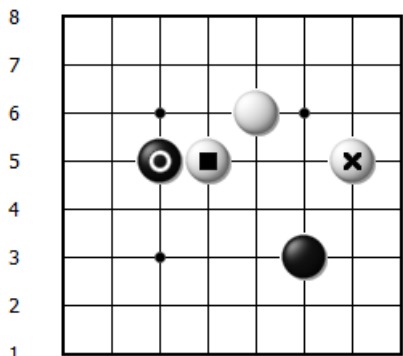
White plays D5.

Black **drops** on D5. The circles indicate the places to which the white pawn can move.

Black is positioned on D5 and White **moves** to E6.

Black plays the **free** stone on F3. The crosses indicate that there are no pieces around it.

A B C D E F G H



A B C D E F G H

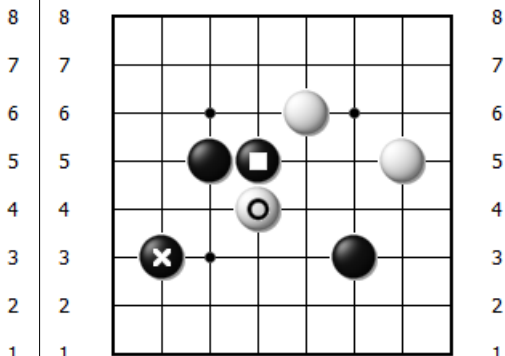
White drops on D5 and moves Black to C5: D5>C5.

Subsequently, White plays the free stone on G5.

So the complete notation is:

W D5>C5+G5.

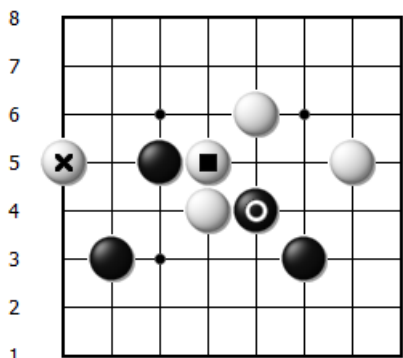
A B C D E F G H



A B C D E F G H

B D5>D4+B3.

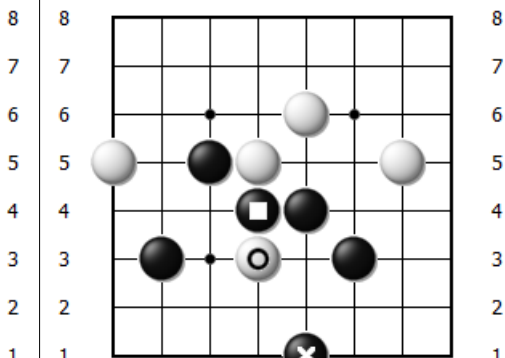
A B C D E F G H



A B C D E F G H

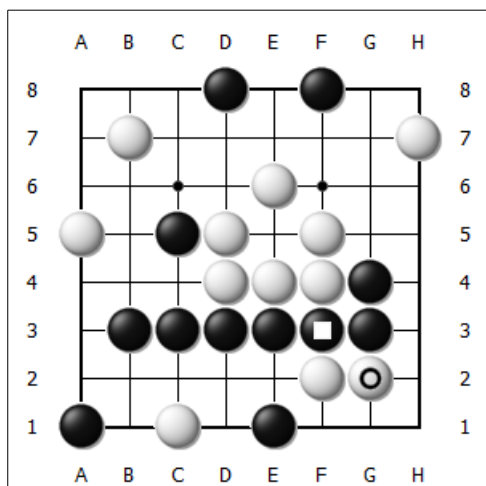
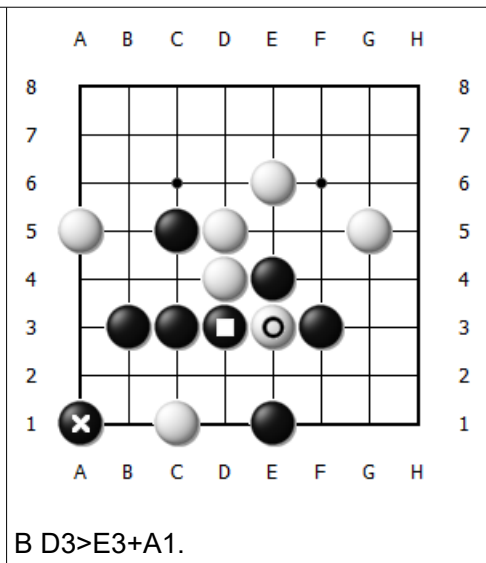
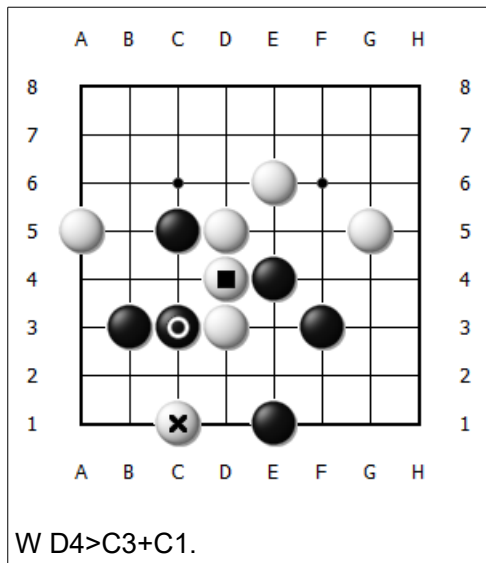
W D5>E4+A5.

A B C D E F G H



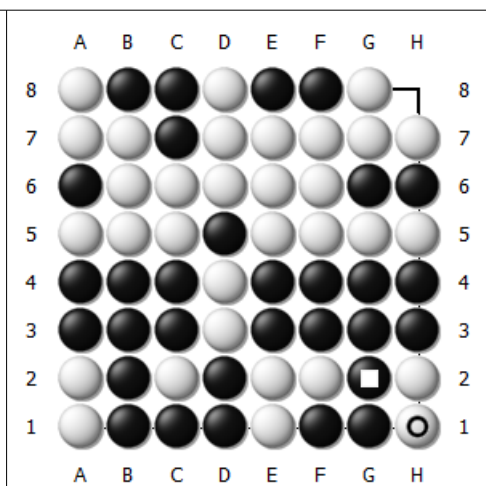
A B C D E F G H

B D4>D3+E1.



Black plays F3>G2 and cannot place the free stone because the board does not have enough space.

Starting from the next turn, White and Black will only play drop moves.



White should make a move, but there are no more Black stones to make a drop move on, so the game ends.

The white group has 22 stones, the black group has 11 stones. White wins.